



**FLEXAHOPPER PLASTICS LTD**



# TANKS.

---

For over 50 years, Flexahopper has manufactured reliable and premium quality tanks to ensure years of high-performance use.

Our engineering expertise and manufacturing technology has resulted into the industry's broadest range of tanks and containers to meet the most demanding application requirements.

# YOUR TANK SPECIALIST.

---

Flexahopper Plastics is a Canadian rotational molding plastics company that has been around since 1967. We are committed to world-class customer service and investment in advanced processing techniques and quality control.

Corrosion, chemical and impact resistant, one piece seamless polyethylene construction and its outstanding resistance against deterioration from UV light are some of the features that make our line of tanks and containers leaders in the industry.

Our tanks and containers are suitable for storage and/or transport of water, most liquid fertilizers, herbicides and insecticides as well as a wide range of industrial chemicals.

## FEATURES

Corrosion and chemical resistant

Rugged impact resistant polyethylene

Outstanding resistance against deterioration from Ultra-Violet light

One piece seamless construction

Comes standard with vented lid and outlet fitting

Semi-transparent for level indication

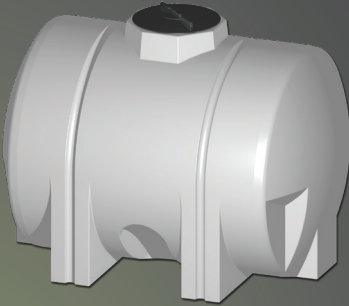
Food grade government approved

Repairable polyethylene



Common uses include the storage of fertilizer solutions, agricultural chemicals, water, liquid feeds, plant foods and liquid food products.

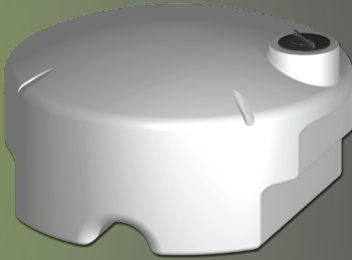
NSF 61 – for safe storage of potable water







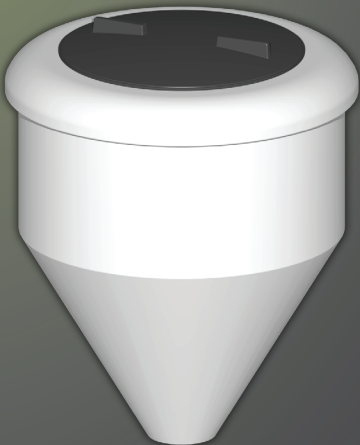
## LOW PROFILE TANKS (LPT)

MODEL	 length x width x height inches	 Imp. Gal. / Litres / US Gal.
LPT 125	55 1/2" x 29" x 31"	125 568 150
LPT 225	61" x 36 1/2" x 38"	236 1073 283
LPT 300	55 1/4" x 58 1/2" x 34 1/4"	300 1364 360
LPT 420	66" x 48" x 48"	420 1909 504
LPT 500	80 5/8" x 48" x 51 3/8"	500 2273 600
LPT 650	102 3/8" x 46 3/4" x 50 1/4"	650 2955 781
LPT 1200	113 1/2" x 75 3/4" x 53"	1200 5455 1441
LPT 2600	150" x 89 1/2" x 75 1/2"	2600 11820 3122





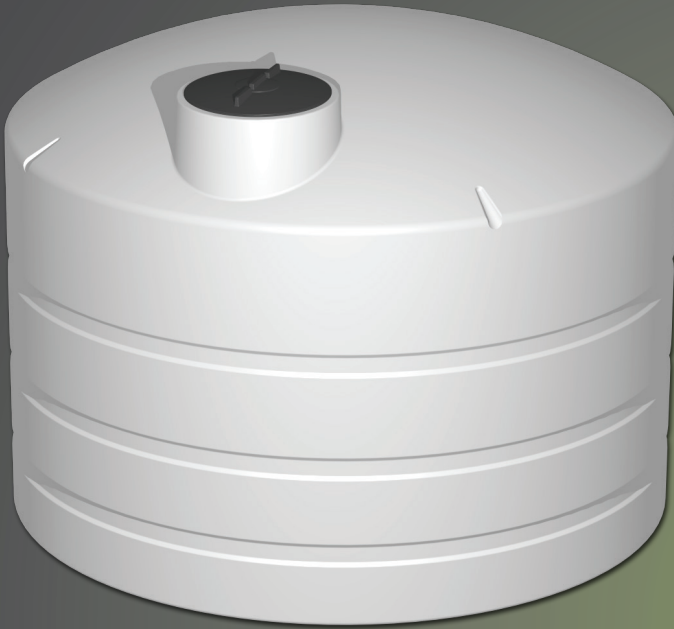
## TURTLE TANKS (TT)

MODEL	 length x width x height inches	 Imp. Gal. / Litres / US Gal.
TT 185	60 3/4" x 51 3/4" x 28 3/4"	185 841 222
TT 350	67 1/2" x 79 3/4" x 35 5/8"	350 1591 420





## MIXERS

MODEL	 diameter x height inches	 Imp. Gal. / Litres / US Gal.
MIX 6.5	12" x 21"	6.5 30 8
MIX 14	18 1/2" x 20 7/8"	14 64 17
MIX 25	26" x 29 1/2"	25 114 30
MIX 60	29 1/2" x 32"	60 273 72





## VERTICAL CYLINDRICAL TANKS (VCT)

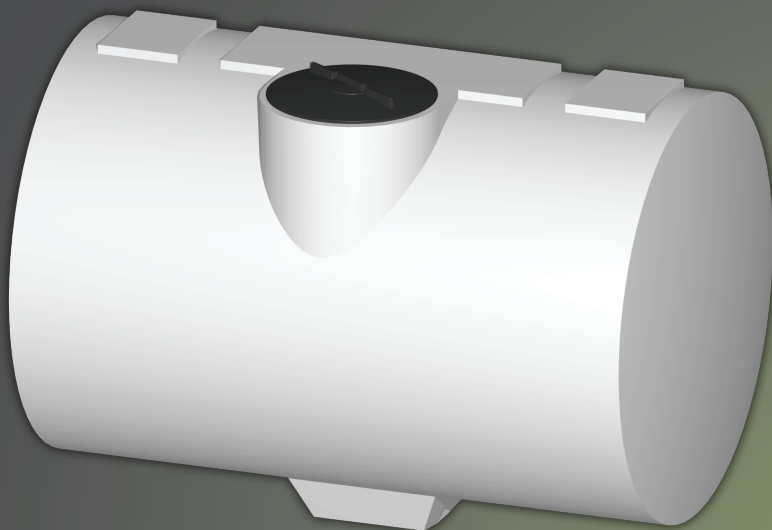
MODEL	 width x height inches	 Imp. Gal. / Litres / US Gal.
VCT 120	30" x 50"	120 546 144
VCT 180	30" x 80"	180 818 216
VCT 200	31" x 77"	200 909 240
VCT 300	36" x 86"	300 1364 360
VCT 500	59" x 66"	500 2273 600
VCT 500N	49" x 84"	525 2387 630
VCT 505	36" x 136"	505 2296 606
VCT 750N	49" x 114"	750 3410 901
VCT 840	66" x 74"	840 3819 1009
VCT 850	87" x 48"	898 4082 1078
VCT 900	59" x 106"	900 4091 1081
VCT 925N	49" x 142"	911 4141 1094
VCT 1000	66" x 93"	1000 4546 1200
VCT 1250	87" x 64"	1250 5683 1501
VCT 1275	66" x 112"	1295 5887 1555
VCT 1300	75" x 88"	1300 5910 1561
VCT 1550	87" x 80"	1550 7046 1861
VCT 1700	66" x 149"	1700 7728 2042
VCT 2000	97" x 94"	2000 9092 2402
VCT 2200	87" x 105"	2200 10001 2642
VCT 2600	90" x 132"	2600 11820 3122
VCT 3150	97" x 144"	3150 14320 3783
VCT 4300	120" x 118"	4300 19548 5164
VCT 5700	120" x 152"	5700 25913 6845





## CONE BOTTOM TANKS (CBT)

MODEL	 width x height inches	 Imp. Gal. / Litres / US Gal.
CBT 228	31 3/4" x 93 5/8"	228 1037 274
CBT 250	52 3/4" x 47 5/8"	250 1137 300
CBT 500	49" x 98 1/4"	500 2273 600
CBT 565	52 3/4" x 101 3/4"	565 2569 679
CBT 775	88" x 59 3/4"	789 3587 948
CBT 900	88" x 65 1/2"	906 4119 1088
CBT 1050	88" x 71 3/4"	1048 4764 1259
CBT 1240	88" x 80 3/4"	1243 5651 1493
CBT 1400	88" x 88"	1396 6346 1677
CBT 1500	88" x 93"	1502 6828 1804
CBT 1730	88" x 103 3/4"	1733 7878 2081
CBT 2450	88" x 136 3/4"	2450 11138 2942
CBT 2750	88" x 152 3/4"	2787 12670 3347
CBT 2800	88" x 157 3/4"	2904 13202 3488
CBT 3050	88" x 164 1/2"	3046 13847 3658
CBT 3250	88" x 173 1/2"	3241 14734 3892
CBT 4500	120" x 142 9/16"	4500 20457 5404
CBT 6000	120" x 16' 4 1/4"	6000 27277 7206
STAND	51" x 16" (Fits 51" dia. CBT)	
STAND	88" x 16" (Fits 88" dia. CBT)	
STAND	120" x 16" (Fits 120" dia. CBT)	

# 4 SPRAYER TANKS





## SPRAYER TANKS (SPR)

MODEL	 length x width x height inches	 Imp. Gal. / Litres / US Gal.
SPR 70	54" x 23" x 25 1/2"	70 318 84
SPR 117	52" x 28 5/8" x 28 5/8"	117 532 141
SPR 125	54 13/16" x 28 3/4" x 31"	125 568 150
SPR 175	58" x 35" x 39"	175 796 210
SPR 180	64 3/8" x 19" x 47 1/2"	180 818 216
SPR 225	61" x 36 1/2" x 38"	225 1023 270
SPR 400	73 1/4" x 46" x 50 1/4"	400 1818 480
SPR 625	101 3/4" x 47 1/2" x 53 1/2"	625 2841 751
SPR 650	102 3/8" x 46 3/4" x 49 7/8"	650 2955 781
SPR 660	110 1/2" x 51 5/8" x 48 1/2"	660 3000 793
SPR 700	104 13/16" x 48 15/16" x 60 3/4"	700 3172 841
SPR 1000	110 1/2" x 51 5/8" x 68 1/4"	1000 4546 1201
SPR 1100	88 3/4" x 77 3/4" x 69 9/16"	1100 5001 1321





## OPEN TOP TANKS (OT)

MODEL	 diameter x height inches		Imp. Gal. / Litres / US Gal.		
OT 500	58" x 58 1/2"	500	2273	600	
OT 850	87" x 38 1/2"	850	3864	1021	
OT 858	87" x 52 1/4"	858	3901	1030	
OT 1100	87" x 52"	1100	5001	1321	
OT 1050	92 1/8" x 44 3/8"	1050	4773	1261	
OT 1400	87" x 67 1/2"	1400	6365	1681	
OT 1640	91" x 66 1/4"	1640	7456	1970	
OT 2000	96" x 74"	2000	9092	2402	
OT 2050	87" x 92"	2050	9319	2462	
OT 2450	87" x 115"	2450	11138	2942	
OT 3500	143" x 71 1/2"	3500	15911	4203	
OT 5000	178 5/8" x 71"	5000	22730	6005	
OT 5500	176" x 68"	5500	25004	6605	



## VERTICAL OVAL TANKS (VOT)

MODEL  length x width x height  
inches  Imp. Gal. / Litres / US Gal.

VOT 100	35" x 27 1/2" x 41 1/2"	100	455	120
VOT 200	35" x 28" x 78"	200	909	240

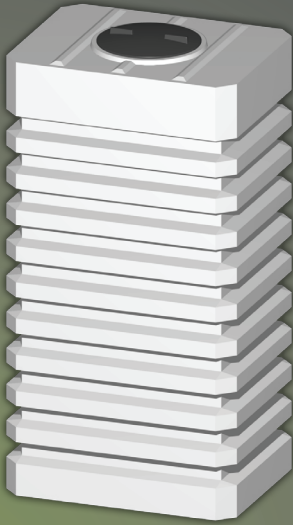


## SIDE BOTTOM DISCHARGE TANKS (SBDT)



MODEL  width x height  
inches  Imp. Gal. / Litres / US Gal.

SBDT 130	32" x 75 3/4"	132	600	159
SBDT 165	32" x 68 1/2"	165	750	198
SBDT 5250	108 1/4" x 169 7/8"	5250	23867	6305





## VERTICAL SQUARE (VSQ)

MODEL  length x width x height  
inches  Imp. Gal. / Litres / US Gal.

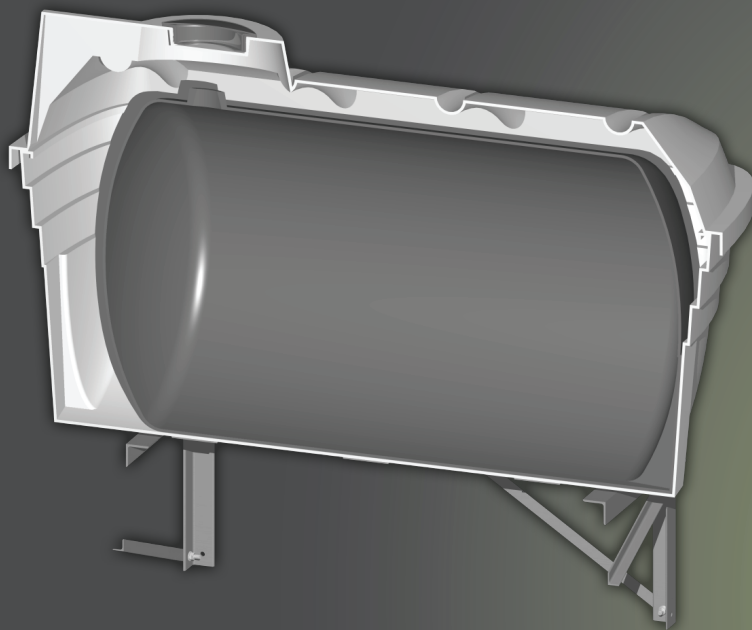
VSQ 333	42 1/2" x 32 1/2" x 79 1/4"	333	1514	400
VSQ 2500	88" x 100 3/4" x 83"	2500	11365	3002



## TAPER TANKS

MODEL  diameter x height  
inches  Imp. Gal. / Litres / US Gal.

TAPER 100	24 13/16" x 50 1/2"	100	455	120
TAPER 275	41 9/16" x 54 1/4"	275	1250	330



## DOUBLE WALL TANKS

MODEL



length x width x height  
inches



Imp. Gal. / Litres / US Gal.

DW 50	37" x 14 7/8" x 53"	53	240	64
DW 100	62 5/8" x 39 3/8" x 35 3/8"	100	455	120
DW 120	34 1/4" x 66"	120	546	144
DW 500	96 23/32" x 63" x 64 17/32"	500	2273	600



**FLEXAHOPPER PLASTICS LTD**



100% Canadian owned company.



Since 2007 Flexahopper has demonstrated a strong commitment with the environment by using green energy that comes from wind and water sources across Canada.

---

**BECAUSE GREEN MATTERS AND  
IT IS THE RIGHT THING TO DO.**

## CONTACT US

---

Headquarters

2530 - 39 STREET NORTH, LETHBRIDGE, AB T1H 5J2

Toll Free 1.888.328.8176

Web Site [WWW.FLEXAHOPPER.COM](http://WWW.FLEXAHOPPER.COM)

Telephone 1.403.328.8146

Email [INFO@FLEXAHOPPER.COM](mailto:INFO@FLEXAHOPPER.COM)

Fax 1.403.328.8476

# CONTACT.

---

Headquarters

2530 - 39 STREET NORTH, LETHBRIDGE, AB T1H 5J2

Toll Free 1.888.328.8176

Web Site [WWW.FLEXAHOPPER.COM](http://WWW.FLEXAHOPPER.COM)

Telephone 1.403.328.8146

Email [INFO@FLEXAHOPPER.COM](mailto:INFO@FLEXAHOPPER.COM)

Fax 1.403.328.8476



PRINTED IN CANADA



***FLEXAHOPPER PLASTICS LTD***